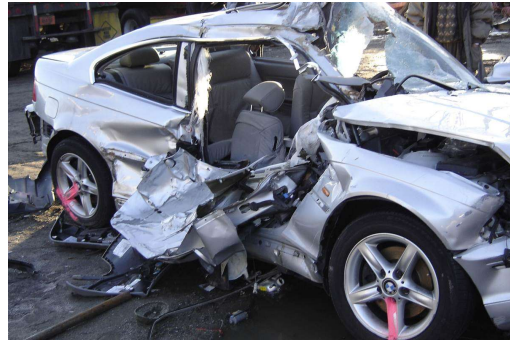


**Underride Crash Photos**  
**Tell the Story of a Neglected Problem**  
Despite the Improvement of Car Safety Features,  
Cars That Go Under Trucks  
Still Look Just as Horrific as Ever.  
**Why is That?**



*Jayne Mansfield's car, 1967*



*Roya Sadigh's car, 2004*



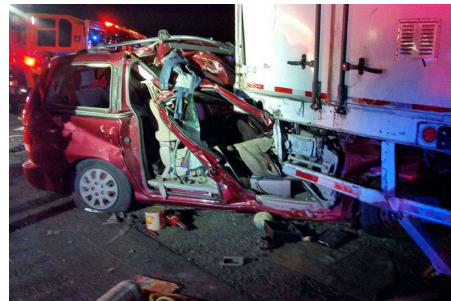
*AnnaLeah & Mary Karth crash, 2013*



*Marshall, Michigan, 2013*



*Side Underride Crash Test, 2017*



*Underride Crash, 2017*

**A “geometric mismatch” results in underride.  
In a collision, the first impact of the truck’s body  
is not with the car’s bumper/crush zone  
but with the windshield  
and next the passenger occupant space.**



*The distance from the floor of the trailer to the pavement is 41 inches, and the height of this car’s hood is about 33 inches.*



**This defective design can be fixed.  
Creative engineers  
have offered solutions for decades.  
So why have they not been put on trucks?**



**The *STOP Underrides! Act of 2017* calls for these solutions to be implemented. Let’s pass it — unless we want people to die!**